

In-person participation by the public will be permitted. In addition, remote public participation is available in the following ways:

1. Livestream online at www.atwater.org (Please be advised that there is a broadcasting delay. If you would like to participate in public comment, please use the option below).
2. Submit a written public comment prior to the meeting: Public comments submitted to cityclerk@atwater.org by 2:00 p.m. on the day of the meeting will be distributed to the Oversight Committee, and made part of the official minutes but will not be read out loud during the meeting.

Assistance will be provided to those requiring accommodations for disabilities in compliance with the Americans with Disabilities Act of 1990. Persons requesting accommodation should contact the City in advance of the meeting, and as soon as possible, at (209) 812-1056.

CITY OF ATWATER AUDIT AND FINANCE COMMITTEE

AGENDA

Council Chambers
750 Bellevue Road
Atwater, California

June 24, 2024

CALL TO ORDER:



4:30 PM

PLEDGE OF ALLEGIANCE TO THE FLAG:

ROLL CALL:

Ambriz _____, Borba _____, Button _____

SUBSEQUENT NEED ITEMS: (The Chair shall announce any requests for items requiring immediate action subsequent to the posting of the agenda. Subsequent need items require a two-thirds vote of the members of the Audit and Finance Committee present at the meeting.)

APPROVAL OF AGENDA AS POSTED OR AS AMENDED: (This is the time for the Audit and Finance Committee to remove items from the agenda or to change the order of the agenda.)

Staff's Recommendation: Motion to approve agenda as posted or as amended.

1. Nomination and Appointment of Audit and Finance Committee Chairperson

Staff's Recommendation: That the Audit and Finance Committee, after opening and closing the nomination period by roll call vote of nominees in order of motion to appoint one (1) candidate to serve as Chairperson, the term of one (1) year, ending December 31, 2024.

2. Nomination and Appointment of Audit and Finance Committee Vice Chairperson

Staff's Recommendation: That the Audit and Finance Committee, after opening and closing the nomination period by roll call vote of nominees in order of motion to appoint one (1) candidate to serve as Vice Chairperson, the term of one (1) year, ending December 31, 2024.

3. March 25, 2024 – Regular Meeting

Staff's Recommendation: Motion to approve minutes as listed.

FUNDING AND BUDGET MATTERS:

4. Treasurer's Report (unaudited) for the month ending May 31, 2024 (City Treasurer Borba)

Staff's Recommendation: Motion to recommend that the City Council accept the Treasurer's Report for the month ending May 31, 2024.

REPORTS AND PRESENTATIONS FROM STAFF:

5. Verbal presentation regarding 4th Quarter 2023 Report on Sales Tax and Business Activity for the City of Atwater (Finance Director Nicholas)

No action requested. Informational item only.

FINANCE DIRECTOR UPDATES:

6. Finance Director Verbal Updates

COMMENTS FROM THE PUBLIC:

NOTICE TO THE PUBLIC

At this time any person may comment on any item which is not on the agenda. You may state your name and address for the record; however, it is not required. Action will not be taken on an item that is not on the agenda. If it requires action, it will be referred to staff and/or placed on a future agenda. Please limit comments to a maximum of three (3) minutes.

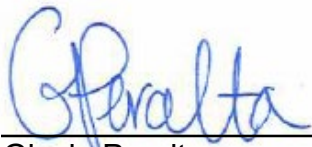
COMMITTEE MEMBER MATTERS:

Committee Member comments

ADJOURNMENT:

CERTIFICATION:

I, Gisela Peralta, Recording Secretary of the City of Atwater, do hereby certify that a copy of the foregoing agenda was posted at City Hall a minimum of 72 hours prior to the meeting.



Gisela Peralta
Recording Secretary

SB 343 NOTICE

In accordance with California Government Code Section 54957.5, any writing or document that is a public record, relates to an open session agenda item and is distributed less than 72 hours prior to a regular meeting will be made available for public inspection in the office of the City Clerk at City Hall during normal business hours at 750 Bellevue Road.

If, however, the document or writing is not distributed until the regular meeting to which it relates, then the document or writing will be made available to the public at the location of the meeting, as listed on this agenda at 750 Bellevue Road.



In compliance with the federal Americans with Disabilities Act of 1990, upon request, the agenda can be provided in an alternative format to accommodate special needs. If you require special accommodations to participate in a City Council, Commission or Committee meeting due to a disability, please contact the City Clerk's Office a minimum of three (3) business days in advance of the meeting at (209) 812-1056. You may also send the request by email to

cityclerk@atwater.org.



CITY OF ATWATER

REGULAR MEETING AUDIT AND FINANCE COMMITTEE

ACTION MINUTES

March 25, 2024

The City of Atwater Audit and Finance Committee met in Regular Session this date at 4:31 PM in the City Council Chambers located at the Atwater Civic Center, 750 Bellevue Road, Atwater, California; Committee Chair Ambriz presiding.

PLEDGE OF ALLEGIANCE OF THE FLAG: *Deferred to Regular Council Meeting.*

ROLL CALL:

Present: Committee Chair Ambriz, Committee Vice Chair Button, Committee Member Borba

Absent: None

Staff Present: Interim City Manager Thompson, Finance Director Nicholas, Administrative Assistant Peralta

APPROVAL OF AGENDA AS POSTED OR AS AMENDED:

MOTION: *Committee Member Borba moved to approve the agenda as posted. The motion was seconded by Committee Vice Chair Button and the vote was: Ayes: Ambriz, Borba, Button; Absent: None; Noes: None. The motion passed.*

SUBSEQUENT NEED ITEMS:

None to report.

MINUTES:

February 26, 2024 – Regular meeting

MOTION: *Committee Chair Ambriz moved to approve the minutes as listed. The motion was seconded by Committee Member Borba and the vote was: Ayes: Borba, Button, Ambriz; Absent: None; Noes: None. The motion passed.*

FUNDING AND BUDGET MATTERS:

Treasurer's Report for the months ending January 31, 2024 and February 29, 2024 (City Treasurer Borba)

MOTION: Committee Vice Chair Button moved to approve the Treasurer's Report as listed. The motion was seconded by Committee Chair Ambriz and the vote was: Ayes: Button, Ambriz; Absent: None; Noes: None. The motion passed.

COMMENTS FROM THE PUBLIC:

No one came forward to speak.

COMMITTEE MEMBER COMMENTS:

Committee Member Borba had nothing to report.

Committee Vice Chair Button had nothing to report.

Committee Chair Ambriz had nothing to report.

ADJOURNMENT:

Committee Chair Ambriz adjourned the meeting at 4:42 PM.

APPROVED:

DANNY AMBRIZ
COMMITTEE CHAIR

ATTEST:

GI SELA PERALTA
RECORDING SECRETARY

STATEMENT OF CHANGES IN CASH BALANCE, UNAUDITED
BY FUND
AS OF 5/31/2024

	FUND	BEG. BALANCE	CASH DEBITS	CASH CREDITS	ENDING BAL.
0001	General Fund	17,702,773.67	1,082,050.87	1,689,769.30	17,095,055.24
0003	General Fund Capital	(590,614.55)	0.00	2,809.19	(593,423.74)
0004	Public Safety Trans & Use Tax	2,303,015.73	561,054.80	921,177.55	1,942,892.98
0005	Ferrari Ranch Project Fund	2,360.27	0.00	0.00	2,360.27
0007	Measure V Fund	4,975,267.58	56,865.00	0.00	5,032,132.58
0008	Measure V 20% Alternative Modes	827,005.97	14,216.25	363.96	840,858.26
0009	Abandoned Veh Abatement Fund	299.00	0.00	2,256.54	(1,957.54)
0010	Measure V Regional Fund	(117,195.54)	0.00	3,646.40	(120,841.94)
1005	Police Grants Fund	103,706.54	0.00	1,583.01	102,123.53
1010	ARPA-American Rescue Plan Act	3,390,313.92	0.00	14,394.69	3,375,919.23
1011	Gas Tax/Street Improvement	(247,382.58)	63,199.93	85,170.89	(269,353.54)
1013	Local Transportation Fund	600,419.32	212.84	200.00	600,432.16
1015	Traffic Circulation Fund	1,548,474.25	725.00	0.00	1,549,199.25
1016	Applegate Interchange	796,512.17	0.00	0.00	796,512.17
1017	RSTP-Regional Surface Transp Prog	2,707,192.35	0.00	0.00	2,707,192.35
1018	SB1-Road Maint & Rehab RMRA	2,277,861.83	71,380.55	9,098.52	2,340,143.86
1019	LPP-Local Partnership Prg Fund	0.00	0.00	0.00	0.00
1020	Parks and Recreation Fund	2,028,308.78	2,382.00	0.00	2,030,690.78
1021	Parks Grants Fund	0.00	0.00	0.00	0.00
1040	General Plan Update-Housing Element	(10,800.00)	0.00	0.00	(10,800.00)
1041	General Plan Update Fund	2,032,946.78	0.00	119,013.75	1,913,933.03
1055	Neighborhood Stabilization	228,103.85	0.00	0.00	228,103.85
1059-80	Housing Grant Funds	840,800.16	1,100.00	0.00	841,900.16
1091	Police Facility Impact Fee	208,420.52	401.00	0.00	208,821.52
1093	Fire Facility Impact Fee	270,664.80	520.00	0.00	271,184.80
1095	Government Building Facility	289,267.88	378.76	0.00	289,646.64
3064-67	Redevelopment/Successor Agency Funds	2,716,559.62	994,799.73	1,987,852.00	1,723,507.35
4020	Performance Bond Trust	226,761.79	0.00	0.00	226,761.79
4030	Narcotics Program Trust	2,141.71	0.00	0.00	2,141.71
4060	Section 125 Medical	1,934.49	70.00	0.00	2,004.49

STATEMENT OF CHANGES IN CASH BALANCE, UNAUDITED
BY FUND
AS OF 5/31/2024

FUND	BEG. BALANCE	CASH DEBITS	CASH CREDITS	ENDING BAL.
4070 Section 125 Dependent Care	0.00	0.00	0.00	0.00
4080 Pension Rate Stblztn 115 Trust	395,704.49	13,128.63	0.00	408,833.12
4090 CFD No. 1 Trust	135,211.57	0.00	0.00	135,211.57
5001-55 All Maintenance Districts	1,287,854.40	23,917.22	28,880.22	1,282,891.40
5050 CFD Districts	(2,234.86)	0.00	153,042.53	(155,277.39)
6000 Water Enterprise Fund	14,344,529.73	665,504.83	304,804.16	14,705,230.40
6001 Water Fund Capital Replacement	(1,043,807.12)	0.00	516,477.99	(1,560,285.11)
6002 DBCP Settlement	21,241.78	0.00	0.00	21,241.78
6004 Water Well- Buhach Colony	190,160.05	0.00	0.00	190,160.05
6005 Water Capital Impact Fees	2,782,564.24	4,559.50	0.00	2,787,123.74
6006 Water Operating Reserve Fund	186,143.27	0.00	0.00	186,143.27
6007 1,2,3-TCP Fund	13,822,703.58	186,718.23	15,041.93	13,994,379.88
6010 Sewer Enterprise Fund	15,471,422.91	1,029,315.71	968,940.12	15,531,798.50
6011 Sewer Fund Capital Replacement	3,878,828.23	4,517.00	0.00	3,883,345.23
6020 Sanitation Enterprise	2,779,108.43	393,255.02	512,899.13	2,659,464.32
7000 Internal Service Fund	703,339.16	3,549.93	129,762.41	577,126.68
7001 ISF Equipment/Bldg Replacement	206,143.88	0.00	0.00	206,143.88
7010 Employee Benefits Fund	761,362.25	4,998.18	83,971.17	682,389.26
7020 Risk Management	443,711.61	0.00	20,664.66	423,046.95
7030 Information Technology	553,043.24	0.00	51,381.61	501,661.63
9090 Accrued Interest Fund	0.00	0.00	0.00	0.00
TOTAL	102,032,151.15	5,178,820.98	7,623,201.73	99,587,770.40

Prepared by: _____

Jared Moua, Accountant I

Approved by: _____

Mark Borba, City Treasurer

**Statement of Changes in Cash Balance
by Bank
As of 5/31/2024**

	Beg. Period Balance	Cash Debits	Cash Credits	End Period Balance
City - LAIF	65,412,110.24			65,412,110.24
City - RMA Long-Term Investment Fund	1,189,391.76			1,189,391.76
City Checking & Investment Accounts	9,524,177.09	4,978,968.22	6,258,591.87	8,244,553.44
Wastewater Checking	1,820,495.08		370,683.86	1,449,811.22
RA Obligation Retirement Fund	993,952.83	5.90	993,926.00	32.73
US Bank/Chandler Asset Mgt.	22,696,319.66	186,718.23		22,883,037.89
PARS Post-Employment Benefits Trust	395,704.49	13,128.63		408,833.12
Totals	<u>102,032,151.15</u>	<u>5,178,820.98</u>	<u>7,623,201.73</u>	<u>99,587,770.40</u>

Prepared by: _____

Jared Moua, Accountant I

Approved by: _____

Mark Borba, City Treasurer

(The following statements are required by California Govt. Code Section 53646 (b) (2,3))

Investments are made pursuant to the City Council approved Investment Policy and Guidelines.

The City of Atwater has the ability to meet its pooled expenditure requirements for the next six months.

Bank Account Detail			
City LAIF	65,412,110.24	Chase General Checking	8,730,518.94
Chandler Asset Mgt.	1,189,391.76	Chase Wastewater Checking	1,449,811.22
US Bank/Chandler Asset Mgt.	22,883,037.89	Chase Redevelopment Checking	32.73
PARS Post-Employment Benefits Trust	408,833.12	Chase Savings Account	0.00



Quarterly Report on Sales Tax and Business Activity

Top 25 Sales Tax Remitters

ARCO AM/PM MINI MARTS
 BOOT BARN
 CHEVRON SERVICE STATIONS
 CIRCLE K SERVICE STATIONS
 FOOD 4 LESS
 HUNT & SONS
 JACK IN THE BOX RESTAURANTS
 JIM BRISCO ENTERPRISES
 MARSHALL'S STORES
 MAXI MART & GAS
 MCDONALD'S RESTAURANTS
 NCI GROUP
 O'REILLY AUTO PARTS
 PANDA EXPRESS
 ROYAL CROWN SERVICE STATIONS
 SAVE MART SUPERMARKETS
 SHELL SERVICE STATIONS
 STAGE STOP SPORTING GOODS
 SUNBELT RENTALS
 TACO BELL
 TARGET STORES
 TRACTOR SUPPLY COMPANY
 VALERO SERVICE STATIONS
 WAL MART STORES
 WEST-MARK

Business Activity

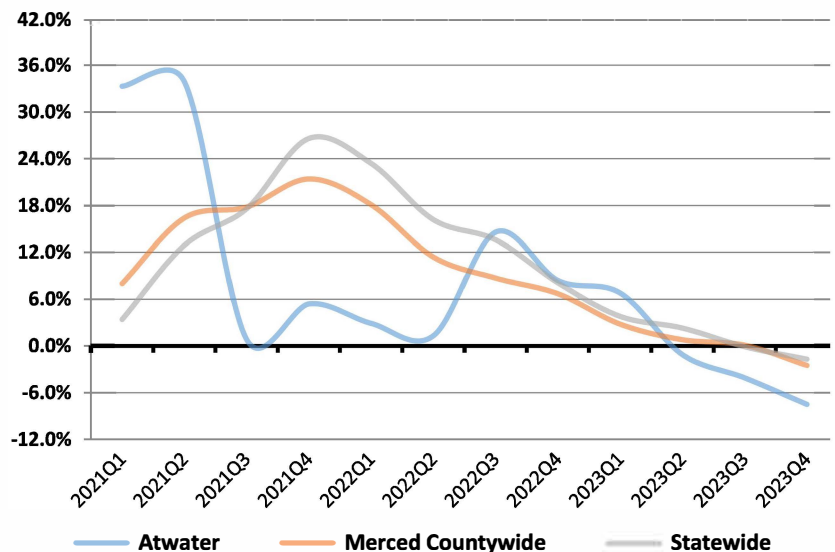
General Retail
 Food Products
 Transportation
 Construction
 Business To Business
TOTAL LOCAL BUSINESS ACTIVITY
COUNTYWIDE POOL ACTIVITY

4th Quarter 2023 in Review

California sales tax cash receipts decreased by 2.9% from the same quarter last year. In this jurisdiction sales tax cash receipts decreased by 10.4% from the same quarter last year due to a decrease of \$13,869,000 in Taxable Sales.

Cash Receipts	Quarter	Annual
Atwater	-10.4%	-7.5%
Merced Countywide Pool	-13.1%	-5.7%
Merced Countywide	-4.4%	-2.5%
Central Valley Region	4.7%	0.4%
Statewide	-2.9%	-1.7%

Annualized Percent Change in Sales Tax Cash Receipts



Atwater		California	
Quarter	Annual	Quarter	Annual
-2.9%	-1.4%	-2.9%	-1.2%
-5.3%	0.3%	-1.9%	0.9%
7.2%	-11.1%	-6.8%	-6.8%
-9.5%	-16.0%	-2.4%	-5.8%
-45.4%	-30.1%	-6.9%	-6.4%
-3.5%	-6.2%	-4.1%	-3.5%
-18.5%	-10.3%	-11.0%	-5.7%





News

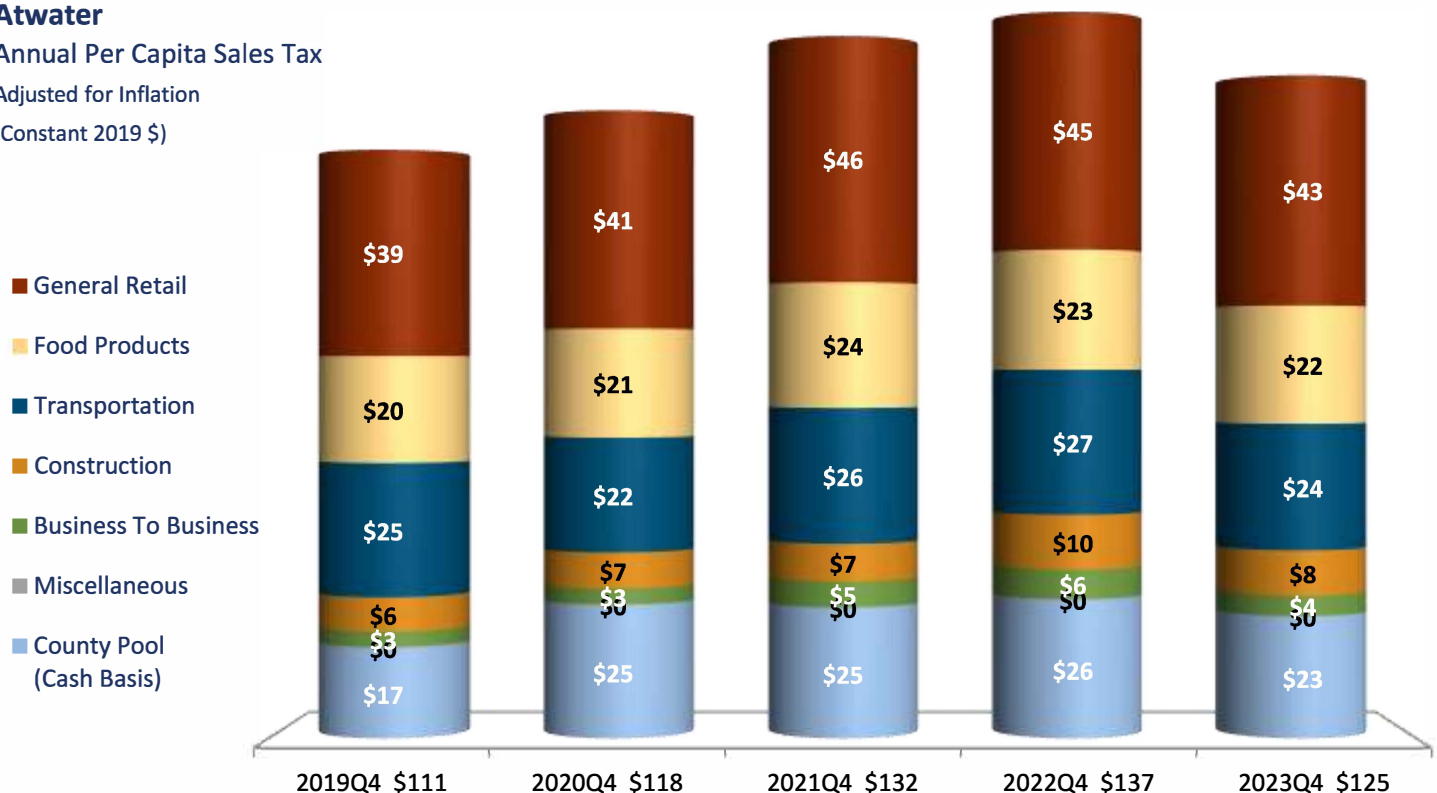
- Economic Activity:** Real Gross Domestic Product (GDP) increased at an annual rate of 3.2% in the fourth quarter of 2023. U.S. inflation decreased to 3.1% in December of 2023 compared to 8.1% the same month a year ago. California's headline inflation decreased to 3.5% year over year as of December of 2023, down from 4.9% in December of 2022. (DIR, BEA, BLS, February Finance Bulletin)
- Employment:** The U.S. unemployment rate decreased slightly to 3.7% in December of 2023. California's unemployment rate increased slightly to 5.1% in December of 2023, 1.0 percentage point higher than November of 2022 rate of 4.1%. (EDD, BLS, February Finance Bulletin)
- Personal Income:** U.S. personal income increased by 4.6% for the fourth quarter of 2023, compared to same quarter previous year. Compensation of employees increased by 6.1% while personal current taxes decreased by 10.5% from the previous period, resulting in a net gain of 7.0% in disposable income. The increase of disposable income generated a 31.6% increase in US personal savings for the fourth quarter of 2023, compared to same quarter previous year. (BEA)

Atwater

Annual Per Capita Sales Tax

Adjusted for Inflation

(Constant 2019 \$)



CENTRAL VALLEY: Quarterly Comparison of 2022Q4 and 2023Q4 (October through December Sales)

	General Retail	Food Products	Transportation	Construction	Business To Bus	Miscellaneous	Oct - Dec 2023 (2023Q4)	Oct - Dec 2022 (2022Q4)	% Chg	Gain	Gain	Decline	Decline
CALAVERAS COUNTY													
ANGELS CAMP	-34.1%	-9.2%	-3.4%	0.0%	-5.1%	-96.6%	196,112	227,732	-13.9%	Leasing	Business Services	Miscellaneous Retail	Food Markets
FRESNO COUNTY													
CLOVIS	6.4%	-1.9%	-6.1%	13.8%	-6.1%	-53.6%	7,118,512	7,092,717	0.4%	Department Stores	Bldg.Matls-Whsle	Auto Sales - New	Health & Government
FRESNO	-10.5%	-2.1%	-3.7%	0.2%	-7.1%	-3.8%	33,462,474	35,826,988	-6.6%	Bldg.Matls-Whsle	Misc. Vehicle Sales	Miscellaneous Retail	Department Stores
KERMAN	-2.1%	7.5%	9.4%	57.8%	-7.1%	15.6%	530,318	500,847	5.9%	Bldg.Matls-Whsle	Auto Sales - New	Heavy Industry	Department Stores
KINGSBURG	2.4%	-0.4%	-6.1%	-32.4%	38.8%	-44.4%	326,163	327,069	-0.3%	Heavy Industry	Light Industry	Bldg.Matls-Whsle	Liquor Stores
REEDLEY	-7.8%	-5.2%	-28.5%	19.4%	-27.0%	-33.7%	469,441	551,853	-14.9%	Bldg.Matls-Whsle	Restaurants	Auto Sales - New	Auto Sales - Used
SANGER	-0.7%	0.4%	1.0%	21.8%	212.3%	208.3%	858,585	810,842	5.9%	Bldg.Matls-Whsle	Office Equipment	Food Processing Eqp	Bldg.Matls-Retail
INYO COUNTY													
BISHOP	-9.4%	5.5%	-12.9%	15.5%	-78.6%	-20.5%	488,630	567,562	-13.9%	Restaurants	Bldg.Matls-Whsle	Energy Sales	Service Stations
KERN COUNTY													
ARVIN	-12.4%	-2.7%	-5.0%	-34.3%	0.9%	1.5%	227,932	236,366	-3.6%	Restaurants	Business Services	Food Processing Eqp	Service Stations
BAKERSFIELD	-4.4%	-2.9%	-6.8%	-1.5%	-7.7%	12.8%	20,633,655	21,676,781	-4.8%	Florist/Nursery	Miscellaneous Retail	Auto Sales - New	Department Stores
DELANO	-4.1%	-1.4%	-7.7%	0.9%	1.9%	7.3%	1,503,545	1,549,393	-3.0%	Heavy Industry	Restaurants	Food Processing Eqp	Auto Sales - New
SHAFTER	48.2%	19.2%	-4.8%	-19.1%	-53.5%	-0.3%	6,300,738	5,285,195	19.2%	Miscellaneous Retail	Chemical Products	Furniture/Appliance	Heavy Industry
KINGS COUNTY													
HANFORD	-3.6%	-1.3%	-1.6%	-3.5%	19.8%	-30.2%	3,265,065	3,309,745	-1.3%	Heavy Industry	Liquor Stores	Department Stores	Service Stations
MADERA COUNTY													
CHOWCHILLA	3.3%	5.4%	2.9%	12.3%	-7.2%	-74.0%	577,388	557,223	3.6%	Bldg.Matls-Whsle	Auto Sales - Used	Service Stations	Heavy Industry
MERCED COUNTY													
ATWATER	-2.9%	-5.3%	7.2%	-9.5%	-45.4%	-16.7%	993,988	1,029,796	-3.5%	Service Stations	Miscellaneous Retail	Energy Sales	Misc. Vehicle Sales
LOS BANOS	0.2%	-3.1%	-1.5%	2.1%	15.4%	-8.1%	1,444,399	1,437,358	0.5%	Energy Sales	Service Stations	Misc. Vehicle Sales	Food Markets
SAN JOAQUIN COUNTY													
COUNTY OF SAN JOAQUIN	-14.0%	-5.5%	-3.8%	-1.6%	-0.3%	-7.6%	7,285,618	7,766,434	-6.2%	Electronic Equipment	Leasing	Department Stores	Miscellaneous Retail
ESCALON	-25.5%	16.9%	-46.2%	-13.5%	-28.3%	-7.6%	225,532	321,335	-29.8%	Restaurants	Service Stations	Auto Sales - New	Miscellaneous Retail
LATHROP	-0.9%	-5.4%	37.2%	28.6%	17.2%	22.7%	2,543,009	2,209,864	15.1%	Auto Parts/Repair	Energy Sales	Auto Sales - New	Service Stations
LODI	1.3%	-7.7%	-6.4%	2.1%	31.3%	39.1%	3,829,631	3,800,699	0.8%	Business Services	Bldg.Matls-Whsle	Food Processing Eqp	Food Markets
MANTECA	1.0%	0.6%	-5.5%	1.5%	-18.5%	-18.9%	4,331,992	4,423,434	-2.1%	Miscellaneous Retail	Service Stations	Heavy Industry	Department Stores
RIPON	-6.2%	-1.1%	2.7%	37.3%	-20.6%	-61.4%	941,377	906,648	3.8%	Bldg.Matls-Whsle	Misc. Vehicle Sales	Miscellaneous Retail	Service Stations
STOCKTON	-13.8%	-2.7%	8.5%	7.9%	-8.6%	0.2%	16,803,706	17,573,199	-4.4%	Auto Sales - New	Bldg.Matls-Whsle	Miscellaneous Retail	Heavy Industry
TRACY	38.3%	-2.7%	0.4%	2.5%	-3.5%	-0.5%	19,725,304	16,386,947	20.4%	Miscellaneous Retail	Bldg.Matls-Whsle	Furniture/Appliance	Heavy Industry
STANISLAUS COUNTY													
CERES	-1.9%	14.3%	-8.6%	2.0%	-46.2%	7.8%	1,707,643	1,790,870	-4.6%	Restaurants	Food Markets	Energy Sales	Misc. Vehicle Sales
MODESTO	-3.7%	-2.7%	-8.4%	-3.9%	-15.3%	31.6%	9,110,595	9,615,536	-5.3%	Miscellaneous Retail	Miscellaneous Other	Furniture/Appliance	Service Stations
OAKDALE	-5.1%	-0.6%	5.9%	8.6%	4.7%	-39.1%	1,023,612	998,458	2.5%	Light Industry	Service Stations	Energy Sales	Food Processing Eqp
RIVERBANK	2.1%	-1.4%	-8.4%	-0.6%	-13.4%	-2.2%	974,981	989,346	-1.5%	Apparel Stores	Restaurants	Department Stores	Service Stations
TURLOCK	39.5%	-5.7%	2.3%	-5.9%	8.6%	4.9%	5,309,733	4,544,209	16.8%	Miscellaneous Retail	Light Industry	Heavy Industry	Service Stations
TULARE COUNTY													
COUNTY OF TULARE	195.2%	-3.5%	1.5%	19.7%	68.5%	-86.5%	3,719,471	2,806,156	32.5%	Miscellaneous Retail	Electronic Equipment	Miscellaneous Other	Food Markets
DINUBA	-10.1%	11.2%	-11.4%	13.2%	0.5%	-13.1%	6,521,600	7,188,344	-9.3%	Food Markets	Restaurants	Furniture/Appliance	Auto Sales - New
EXETER	-7.8%	0.2%	1.9%	1.8%	-74.1%	-16.6%	215,760	253,436	-14.9%	Food Markets	Auto Parts/Repair	Business Services	Heavy Industry
FARMERSVILLE	-27.1%	3.6%	-10.5%	16.1%	-28.0%	-1.6%	234,235	269,854	-13.2%	Food Markets	Bldg.Matls-Whsle	Miscellaneous Retail	Drug Stores
LINDSAY	-29.1%	4.9%	-4.8%	-12.8%	-3.8%	-65.7%	326,177	348,982	-6.5%	Office Equipment	Light Industry	Business Services	Drug Stores
PORTERVILLE	-2.3%	2.5%	-3.2%	-8.5%	-47.2%	-39.5%	1,881,551	2,001,922	-6.0%	Auto Parts/Repair	Liquor Stores	Light Industry	Service Stations
TULARE	-1.9%	2.0%	-6.7%	-0.5%	-0.1%	51.8%	3,333,057	3,410,012	-2.3%	Drug Stores	Business Services	Service Stations	Light Industry
VISALIA	4.6%	-0.3%	-7.3%	-5.3%	-13.1%	-16.8%	10,895,356	11,324,957	-3.8%	Apparel Stores	Miscellaneous Retail	Heavy Industry	Office Equipment
WOODLAKE	17.8%	-10.1%	11.7%	-70.2%	-14.2%	18.1%	198,377	214,572	-7.5%	Miscellaneous Retail	Heavy Industry	Chemical Products	Light Industry
TUOLUMNE COUNTY													
SONORA	3.6%	-2.8%	-9.1%	-0.3%	-18.9%	-30.7%	818,471	832,848	-1.7%	Miscellaneous Retail	Department Stores	Food Markets	Service Stations

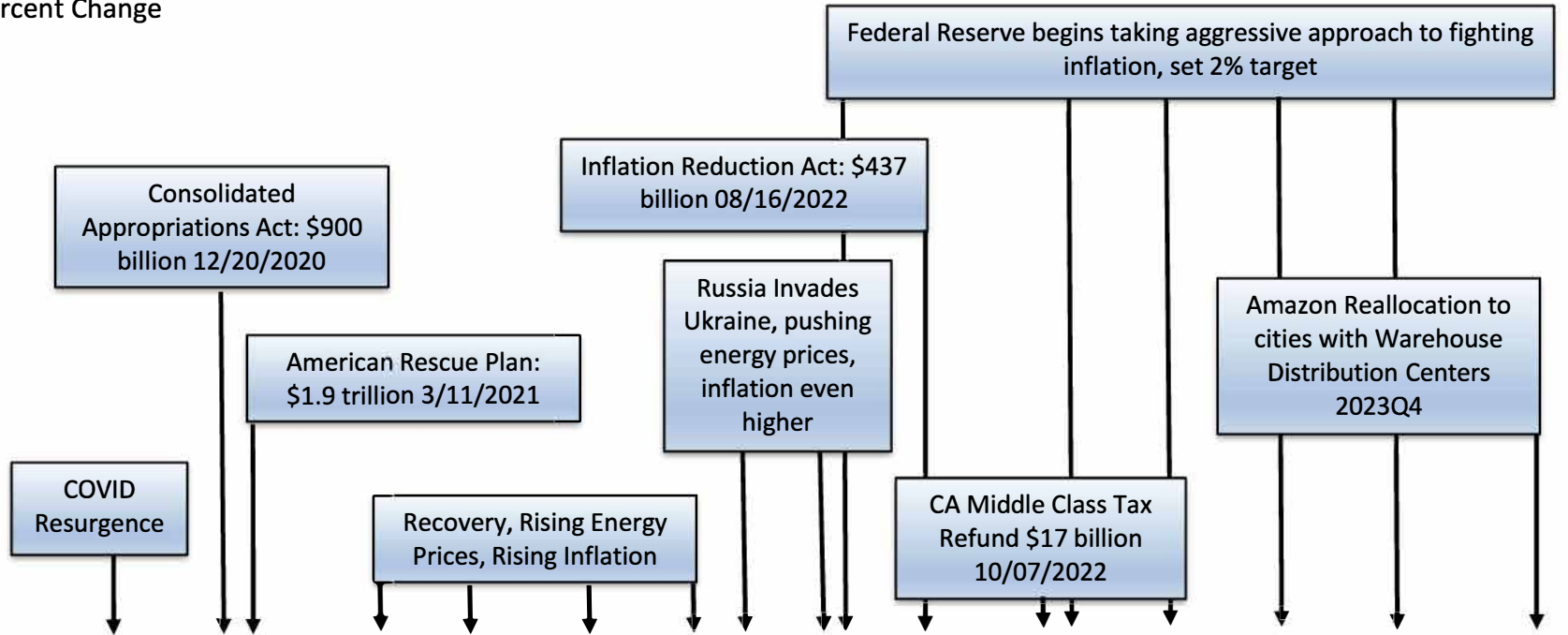
ATWATER

Sales Tax Net Cash Receipts: Two Advances Plus Clean-Up Payment

LAST YEAR CASH RECEIVED > THIS YEAR CASH RECEIVED> CALENDAR SALES QUARTER>	% CHANGE BY MONTH ENDED QUARTER						MOST RECENT FOUR QUARTERS TOTAL			
	Nov-21	Feb-22	May-22	Aug-22	Nov-22	Feb-23	Mar-22 thru	Mar-23 thru	\$ Chg	% Chg.
	Nov-22	Feb-23	May-23	Aug-23	Nov-23	Feb-24	Feb-23	Feb-24		
	22Q3	22Q4	23Q1	23Q2	23Q3	23Q4	2022Q4	2023Q4		
1 MERCED	-3.3%	4.7%	-6.5%	-3.6%	1.9%	-5.2%	17,191,653	16,609,538	-582,115	-3.4
2 MERCED COUNTY	8.2%	9.2%	-1.2%	3.9%	-24.3%	-4.1%	13,306,084	13,396,730	90,645	0.7
3 LOS BANOS	5.2%	11.0%	0.4%	-7.5%	-2.8%	-0.9%	6,613,240	6,424,280	-188,960	-2.9
4 ATWATER	10.2%	2.4%	4.6%	-19.3%	-3.0%	-10.4%	4,656,993	4,308,706	-348,287	-7.5
5 LIVINGSTON	9.2%	-4.6%	1.6%	-8.2%	-4.9%	-0.3%	1,901,369	1,841,031	-60,338	-3.2
6 DOS PALOS	-7.1%	-24.5%	-1.6%	-2.0%	2.0%	6.2%	494,794	500,727	5,933	1.2
7 GUSTINE	57.9%	17.9%	15.4%	-1.8%	-17.9%	1.7%	388,151	378,722	-9,429	-2.4
FRESNO CO TOTAL	4.3%	2.3%	-4.2%	-0.7%	-10.0%	4.1%	243,944,027	243,025,617	-918,410	-0.4
SAN JOAQUIN CO TOTAL	2.1%	2.8%	-6.1%	-2.7%	5.6%	13.7%	236,163,700	242,934,602	6,770,901	2.9
KERN CO TOTAL	14.8%	17.5%	3.4%	-3.4%	3.3%	8.5%	229,520,784	236,316,142	6,795,358	3.0
STANISLAUS CO TOTAL	2.7%	2.6%	-2.6%	-0.5%	-5.7%	-2.2%	130,374,482	128,827,662	-1,546,820	-1.2
TULARE CO TOTAL	4.2%	-2.6%	-7.1%	1.4%	-10.2%	-0.8%	117,336,789	115,047,036	-2,289,753	-2.0
MERCED CO TOTAL	3.6%	5.8%	-2.3%	-3.7%	-8.1%	-4.4%	44,552,284	43,459,734	-1,092,550	-2.5
KINGS CO TOTAL	2.7%	16.0%	-4.0%	-2.3%	-9.6%	-17.2%	26,916,713	25,038,372	-1,878,341	-7.0
MADERA CO TOTAL	2.7%	8.5%	-5.2%	-10.6%	1.3%	-5.2%	26,682,431	25,499,086	-1,183,345	-4.4
TUOLUMNE CO TOTAL	8.9%	2.0%	-3.4%	-1.7%	-8.1%	0.0%	10,253,558	10,171,316	-82,241	-0.8
South Coast	7.7%	2.5%	0.9%	-0.6%	-2.4%	-4.6%	4,119,723,536	4,051,433,542	-68,289,993	-1.7
Inland Empire	8.2%	4.4%	-1.3%	-2.8%	-2.5%	4.1%	1,228,562,097	1,221,931,709	-6,630,387	-0.5
Other Southern	-2.0%	9.4%	-4.6%	12.3%	28.8%	10.4%	40,584,515	45,153,898	4,569,383	11.3
Southern California	7.8%	3.0%	0.3%	-1.0%	-2.3%	-2.5%	5,388,870,147	5,318,519,150	-70,350,997	-1.3
S.F. Bay Area	10.3%	3.7%	1.9%	0.0%	-7.1%	-7.0%	2,003,550,625	1,954,500,095	-49,050,530	-2.4
Central Valley	5.6%	5.5%	-3.1%	-1.9%	-2.8%	4.7%	1,065,744,768	1,070,319,567	4,574,799	0.4
Sacramento Valley	5.5%	0.1%	-3.9%	-2.0%	-1.6%	-1.6%	707,411,617	692,046,828	-15,364,789	-2.2
Central Coast	8.4%	1.9%	-4.0%	0.2%	-1.4%	-2.6%	216,519,786	212,440,822	-4,078,964	-1.9
Other Northern	1.1%	0.2%	-3.0%	-2.7%	-0.1%	-6.5%	88,823,506	86,772,292	-2,051,214	-2.3
North Coast	-4.2%	-4.7%	-6.4%	-4.6%	-0.5%	0.4%	68,928,704	67,042,879	-1,885,825	-2.7
Northern California	7.7%	3.2%	-0.9%	-1.0%	-4.5%	-2.8%	4,150,979,007	4,083,122,483	-67,856,524	-1.6
MUNI/AVENU STATEWIDE	7.7%	3.1%	-0.2%	-1.0%	-3.2%	-2.6%	9,539,849,154	9,401,641,633	-138,207,521	-1.4

California Taxable Sales

Quarter over Quarter Percent Change



JURISDICTION OR REGION	2020Q4	2021Q1	2021Q2	2021Q3	2021Q4	2022Q1	2022Q2	2022Q3	2022Q4	2023Q1	2023Q2	2023Q3	2023Q4
Federal Funds Rate (Top of Target Range) >>>			0.25%	0.25%	0.25%	0.50%	1.75%	3.25%	4.50%	5.00%	5.25%	5.50%	5.50%
City of Atwater	7.8%	27.7%	19.7%	-28.8%	26.5%	11.9%	10.6%	10.3%	2.5%	4.5%	-19.4%	-3.1%	-10.4%
OTHER SOUTHERN	-6.0%	48.1%	17.9%	14.1%	20.0%	26.1%	-0.4%	-2.0%	9.5%	-4.7%	12.2%	28.7%	10.3%
CENTRAL COAST	-2.2%	38.9%	28.7%	11.4%	18.2%	20.5%	4.0%	8.5%	2.0%	-4.1%	0.1%	-1.5%	-2.6%
SOUTH COAST	-10.5%	29.2%	34.6%	18.7%	28.7%	21.1%	5.7%	7.8%	2.6%	0.7%	-0.7%	-2.0%	-4.7%
S.F. BAY AREA	-10.3%	23.2%	26.1%	13.6%	20.2%	19.8%	5.6%	10.4%	3.8%	1.8%	-0.1%	-4.1%	-7.1%
STATEWIDE	-5.8%	32.8%	32.1%	17.6%	25.4%	19.1%	5.0%	7.8%	3.2%	-0.7%	-1.1%	-2.2%	-3.0%
INLAND EMPIRE	3.6%	49.9%	37.5%	21.9%	30.4%	19.1%	6.8%	8.3%	4.5%	-1.4%	-2.8%	-2.6%	4.1%
SACRAMENTO VALLEY	-0.9%	35.4%	27.8%	16.7%	22.8%	15.9%	2.0%	5.6%	0.3%	-4.1%	-2.1%	-1.3%	-1.7%
CENTRAL VALLEY	8.6%	44.6%	33.7%	19.9%	24.3%	14.2%	3.7%	5.7%	5.6%	-3.3%	-2.0%	1.6%	4.7%
NORTH COAST	5.2%	37.6%	24.5%	5.7%	6.4%	2.8%	-5.3%	-4.1%	-4.6%	-6.5%	-4.7%	-0.6%	0.4%
OTHER NORTHERN	7.9%	34.5%	26.5%	9.2%	9.3%	5.6%	-4.9%	1.2%	0.3%	-3.1%	-2.8%	2.6%	-6.6%
Inflation (U.S. CPI-U) >>>			4.8%	5.3%	6.7%	8.0%	8.6%	8.3%	7.1%	6.4%	4.0%	3.5%	3.2%
CA Gasoline Average Retail >>>			43.0%	37.4%	45.9%	43.2%	47.7%	29.3%	14.0%	-8.1%	-20.4%	-7.1%	-3.2%